

## Useful contact numbers

### Rotherham Hospital Switchboard

☎ 01709 820000

### NHS 111 Service

☎ 111

### Health Info

☎ 01709 427190

### Quit Smoking Service

☎ 01709 422444

### UECC (A&E)

☎ 01709 424455

## Useful websites

[www.therotherhamft.nhs.uk](http://www.therotherhamft.nhs.uk)

[www.nhs.uk](http://www.nhs.uk)

[www.rotherhive.co.uk](http://www.rotherhive.co.uk)

## We value your comments

If you have any comments or concerns about the services we have provided please let us know, or alternatively you can contact the Patient Experience Team.

## The Rotherham NHS Foundation Trust

D Level, Rotherham Hospital, Moorgate Road  
Rotherham, S60 2UD

☎ 01709 424461

Monday to Friday, 9.00am until 4.00pm

Email: [your.experience@nhs.net](mailto:your.experience@nhs.net)

If you require this document in another language, large print, braille, audio or easyread format, please ask our healthcare providers.

#### Slovak

Ak vy alebo niekto koho poznáte potrebujete pomoc pri pochopení alebo čítaní tohto dokumentu, prosím kontaktujte nás na vyššie uvedenom čísle alebo nám pošlite e-mail.

#### Slovensky

#### Kurdish Sorani

کوردی سۆرانی  
نهگهر تۆ یان کهسێک که تۆ دهیناسی پێویستی بهیارمهتی ههیهیت بۆ نهوهی لهم بهلگهنامه یه تێبگات یان بیخویننیهوه، تکلیه پهوهندهنیمان پێوه بکه لهسههر نهو ژمارهیهی سههرهوهدا یان بهو نیماهیله.

#### Arabic

عربي  
إذا كنت انت أو اي شخص تعرفه بحاجة إلى مساعدة لفهم أو قراءة هذه الوثيقة، الرجاء الاتصال على الرقم اعلاه، أو مراسلتنا عبر البريد الإلكتروني

#### Urdu

أردو  
اگر آپ یا آپ کے جاننے والے کسی شخص کو اس دستاویز کو سمجھنے یا پڑھنے کیلئے مدد کی ضرورت ہے تو برائے مہربانی مندرجہ بالا نمبر پر ہم سے رابطہ کریں یا ہمیں ای میل کریں۔

#### Farsi

فارسی  
اگر جناب عالی یا شخص دیگری که شما اورا می شناسید برای خواندن یا فهمیدن این مدارک نیاز به کمک دارد لطفاً با ما بوسیله شماره بالا یا ایمیل تماس حاصل فرمایید.

Children staying with us  
for more than 12 weeks  
A guide for Parents and Carers



LS 01/2023 V1 Jones and Brooks  
Sustainable Forests / Low chlorine

**NHS**  
The Rotherham  
NHS Foundation Trust  
Rotherham Hospital  
Moorgate Road  
Oakwood  
Rotherham  
S60 2UD  
Telephone 01709 820000  
[www.therotherhamft.nhs.uk](http://www.therotherhamft.nhs.uk)



The Rotherham  
NHS Foundation Trust

## What happens when my child will stay in a healthcare setting for more than 12 weeks?

When a child stays or is likely to stay in a healthcare setting for more than 12 weeks, their healthcare team has to tell the Local Authority Children's Social Care team where the child usually lives. This has to be done by law (the Children's Act 1989, section 85).



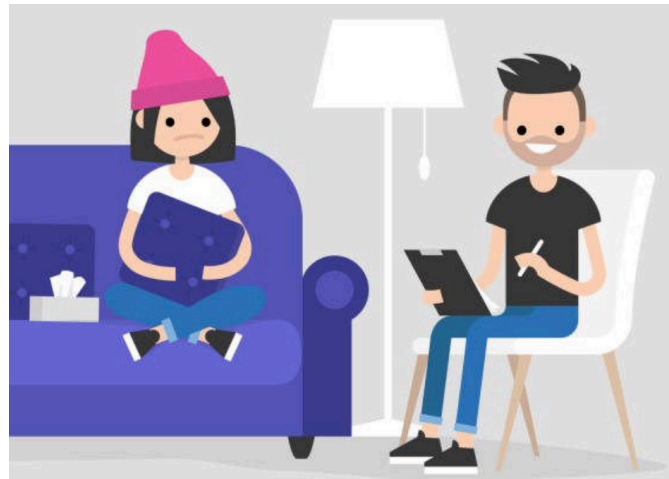
## Why do we have to tell the Local Authority?

Where your child is housed (as an inpatient) is shared to ensure your child's safety and welfare. Children's Social Care must consider this information, providing an additional 'safety net' for children living away from their home and main carers.

We understand that living away from home can be particularly difficult for children and young people and the limited and sometimes controlled contact with family and carers may affect their ability to talk about how they are feeling.

## Some of the responsibilities of the Local Authority include ensuring that:

- Children feel valued and respected and their self-esteem is promoted;
- Children have ready access to a trusted adult outside the institution (hospital), e.g. a family member, social worker, independent visitor or children's advocate.
- Staff and foster carers are trained in all aspects of safeguarding children, can recognise children's vulnerabilities and risks of harm, and know when and how to implement safeguarding children procedures.



## How do you tell the Local Authority?

A healthcare professional; usually a nurse on the ward, will talk to you (parent/carer) about telling the Local Authority where your child is living. This is done by a referral. They will ask you where you live to make sure we refer to the correct Local Authority. The referral will require the hospital to share information with the Local Authority such as:

- Child's full name
- Child's date of birth
- Child's address
- Date of admission to hospital/ward/department
- Reason for admission and current health and social situation of the child
- Parent's name and contact details
- Child's General Practitioner

## What happens next?

A social worker will contact you, and arrange to come and see you as well as your child to complete an assessment. They will make enquiries to check whether your child's welfare is safeguarded and promoted while they are in hospital. To do this they will need to see your child alone (if they are of an appropriate age). They will speak with staff caring for your child. They will also be told when your child is discharged from hospital.

## Any further questions?

If you have any further questions, please speak to your child's named Nurse or Ward Manager.

