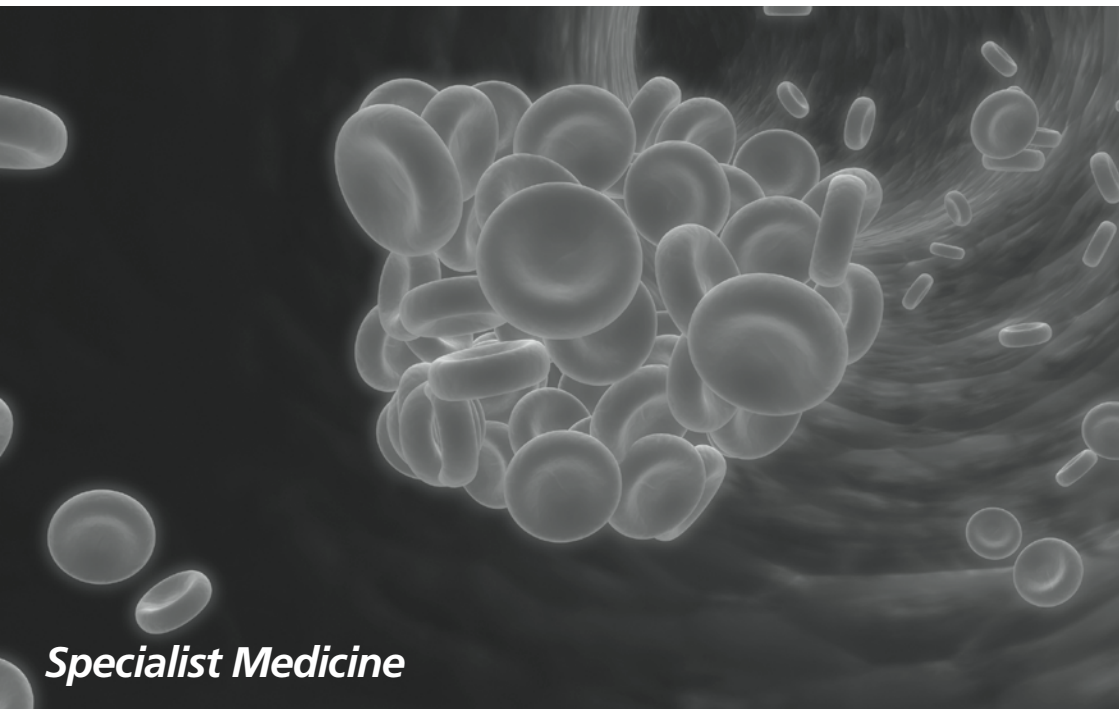


Intrathecal Chemotherapy



Specialist Medicine

patient**information**

Hearing about your experience of our services is very important as it means we can pass compliments to our staff and make improvements where necessary. Tell us what you think at feedback@rothgen.nhs.uk

Slovak

Ak vy alebo niekto koho poznáte potrebuje pomoc pri pochopení alebo čítaní tohto dokumentu, prosím kontaktujte nás na vyššie uvedenom čísle alebo nám pošlite e-mail.

Slovensky

Kurdish Sorani

كوردی سۆرائی
نەگەر تۆ یان کەسێک کە تۆ دەیناسی پێویستی بەیارمەتی ھەبێت یۆ نەوێ لەم بەلگەنامە بە تێبگات یان بێخۆتێنتەو، تکایە پەیوەندیمان پێوە بکە لەسەر نەو ژمارەییە سەرھوددا یان بەو نێمەیلە.

Arabic

عربي
إذا كنت أنت أو أي شخص تعرفه بحاجة إلى مساعدة لفهم أو قراءة هذه الوثيقة، الرجاء الاتصال على الرقم اعلاه، أو مراسلتنا عبر البريد الإلكتروني

Urdu

أردو
اگر آپ یا آپ کے جاننے والے کسی شخص کو اس دستاویز کی سمجھنے یا پڑھنے کیلئے مدد کی ضرورت ہے تو برائے مہربانی مندرجہ بالا نمبر پر ہم سے رابطہ کریں یا ہمیں ای میل کریں۔

Farsi

فارسی
اگر جناب عالی یا شخص دیگری که شما او را می شناسید برای خواندن یا فهمیدن این مدارک نیاز به کمک دارد لطفاً با ما بوسیله شماره بالا یا ایمیل تماس حاصل فرمایید.

If you require this document in another language, large print, braille or audio version, please contact Patient Information on 01709 424281 or email patientinformation@rothgen.nhs.uk

Intrathecal Chemotherapy

Your doctor has prescribed intrathecal chemotherapy (cytotoxic or cell toxic treatment) for your condition. This means that you will have cytotoxic drugs, given by injection, into the fluid around the spinal cord by a lumbar puncture procedure.

Why do I need to have this procedure?

Some patients with Leukaemia and Lymphoma may develop the disease in the brain and spinal cord. Chemotherapy given by injection into a vein cannot treat this, so it is necessary to give the drug in this way.

What will happen before the treatment?

Before receiving your intrathecal chemotherapy, you must be given Intravenous chemotherapy. If you are receiving Vincristine injections as part of your chemotherapy, they must be given on another day. Occasionally, your chemotherapy treatment may require another type of intravenous injection, which has to be given on the same day as your intrathecal treatment. If so, the treatment must have already been given in another area of the hospital earlier in the day to prevent any possibility of the two injections being mixed up. The procedure will be fully explained to you, and you will have the opportunity to ask any questions so that you fully understand your treatment. You will also be given written information about it. You will be asked to sign a consent form for the procedure. If you or your family are not clear about any part of the treatment, ask for more details from the Doctors and Nurses. They are never too busy.

Where will the intrathecal chemotherapy take place?

As this is a special procedure, it will be performed in the Central Treatment Room at Rotherham NHS Foundation Trust. Only specially trained staff will be involved. The doctor, nurse and pharmacist carefully check your injection and identity before the procedure. You can even check the drug yourself before it is given. If the lumbar puncture is difficult we may need to use x-rays to ensure the needle is in the right place. If this is the case the procedure will be performed in the x-ray department.

The Lumbar Puncture Procedure

You will be asked to lie on your side, with your knees drawn up to your tummy, and held in place by your hands. The nurse will support you in this position. It is important that you remain very still, but to tell the doctor how you are feeling throughout the procedure.

- The skin will be cleaned with an antiseptic cleaning agent
- The area to be punctured will have a local anaesthetic put into the skin
- The spinal needle will be inserted into your spine
- A few drops of spinal fluid are collected to be tested to check on the progress of your treatment
- The intrathecal chemotherapy will be put in with a small syringe
- The needle will be taken out and a small dressing put over the area
- You will be asked to lie flat on your back on the bed for about 4 hours after the procedure

If at any point you are concerned about any aspect of the procedure, you can ask for the doctor to stop. You can then discuss your concerns with them.

How will I feel after my lumbar puncture?

Most people have no after-effects from their lumbar puncture. However, you may:

- Feel some burning or soreness where the needle went in
- For a number of people (about 20%) having a lumbar puncture can lead to headaches. If you do develop a headache, it may not be for 2 – 3 days after the procedure. This is because it takes a little time for the lumbar puncture site to heal over, and there is a small amount of fluid leakage. If you do get headache lie down and drink plenty of non-alcoholic drinks and it should go away.
- Rarely, having a lumbar puncture can irritate the nerve root, and this may cause some discomfort.

If you get a headache that does not go away or becomes much worse, and your neck feels stiff, you must contact Ward A7 immediately.

What should I do when I get home?

Once you are back at home you should:

- Rest for the remainder of the day
- Drink plenty of non-alcoholic fluids
- If you do get a headache or lower back discomfort, lie down and take pain relief (not paracetamol/ ibuprofen/aspirin)

How to contact us

Haematology Ward (A7)

Telephone 01709 424231

**Clinical Nurse Specialist
in Haematology**

Telephone 01709 424231

Haematology Secretary

Telephone 01709 427112

Switchboard

Telephone 01709 820000

Useful contact numbers

NHS Direct

Telephone 0845 4647

Health Info

Telephone 01709 427190

Stop Smoking Service

Telephone 01709 422444

Patient Services

Telephone 01709 424461

A&E

Telephone 01709 424455

**For GP out of hours,
contact your surgery**

Useful websites

www.nhs.uk

www.direct.gov.uk

www.therotherhamft.nhs.uk

We value your comments

If you have any comments or concerns about the care we have provided please let us know, or alternatively you can write to:

Patient Services

**The Rotherham NHS
Foundation Trust**

Rotherham Hospital

Moorgate Road

Oakwood

Rotherham

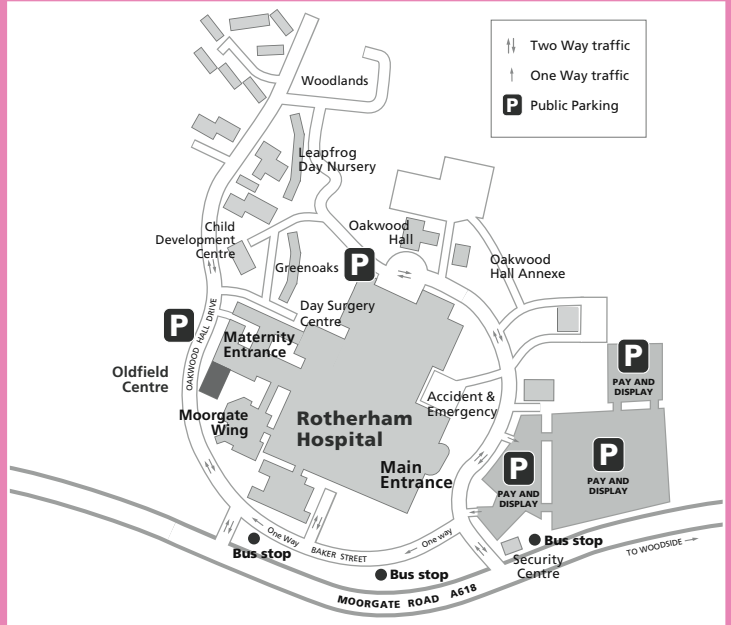
S60 2UD

Telephone 01709 424461

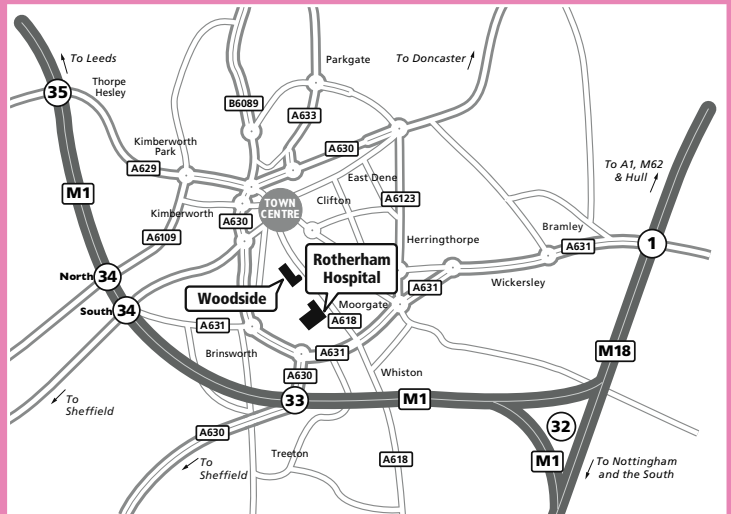
Email complaints@rothgen.nhs.uk

How to find us

Hospital site plan



Rotherham main routes





LS 113 05/12 V2 WFO



The Rotherham **NHS**
NHS Foundation Trust

Rotherham Hospital
Moorgate Road
Oakwood
Rotherham
S60 2UD

Telephone 01709 820000
www.therotherhamft.nhs.uk

