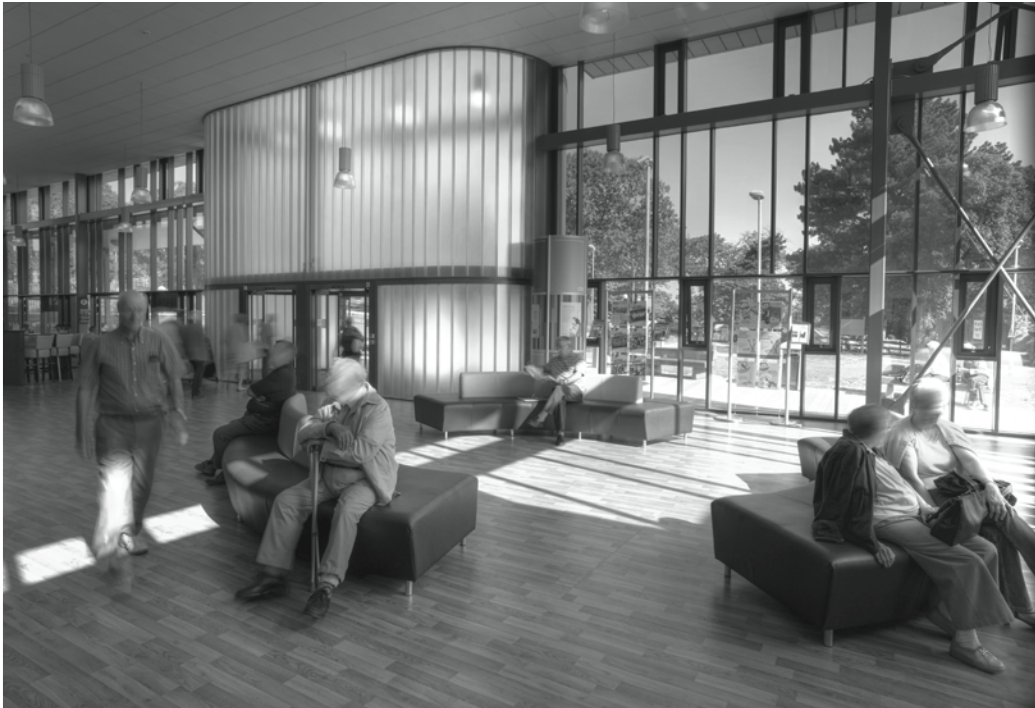


Guidelines for patients with diabetes on tablets undergoing Colonoscopy on an afternoon list

LS 671 04/13 V2 WFO



Endoscopy Unit

patientinformation

The Rotherham **NHS**
NHS Foundation Trust

Rotherham Hospital
Moorgate Road
Oakwood
Rotherham
S60 2UD

Telephone 01709 820000
www.therotherhamft.nhs.uk



Your health, your life, your choice, our passion



Hearing about your experience of our services is very important as it means we can pass compliments to our staff and make improvements where necessary. Tell us what you think at feedback@rothgen.nhs.uk

Slovak

Ak vy alebo niekto koho poznáte potrebuje pomoc pri pochopení alebo čítaní tohto dokumentu, prosím kontaktujte nás na vyššie uvedenom čísle alebo nám pošlite e-mail.

Kurdish Sorani

كوردى سورانى
نه‌گه‌ر تو یان كه‌سێك كه تو ده‌بناسی ب‌یویستی به‌یارمه‌تی هه‌بێت بۆ نه‌وه‌ی لهم به‌لگه‌نامه به‌ تێبگه‌ت یان ب‌بخوێنته‌وه، ته‌كه‌یه به‌یو نه‌دیمان ب‌یوه ب‌كه له‌سه‌ر نه‌و ژماره‌یه‌ی سه‌ره‌وه‌دا یان به‌و نه‌مه‌یه‌یه.

Arabic

عربي
إذا كنت أنت أو أي شخص تعرفه بحاجة إلى مساعدة لفهم أو قراءة هذه الوثيقة، الرجاء الاتصال على الرقم اعلاه، أو مراسلتنا عبر البريد الإلكتروني

Urdu

اُردو
اگر آپ یا آپ کے جاننے والے کسی شخص کو اس دستاویز کو سمجھنے یا پڑھنے کیلئے مدد کی ضرورت ہے تو برائے مہربانی مندرجہ بالا نمبر پر ہم سے رابطہ کریں یا ہمیں ای میل کریں۔

Farsi

فارسی
اگر جناب عالی یا شخص دیگری که شما او را می شناسید برای خواندن یا فهمیدن این مدارک نیاز به کمک دارد لطفاً با ما بوسیله شماره بالا یا ایمیل تماس حاصل فرمایید.

If you require this document in another language, large print, braille or audio version, please contact Patient Information on 01709 424281 or email patientinformation@rothgen.nhs.uk

Patients with diabetes on tablets undergoing Colonoscopy on an afternoon list

Introduction

There are different insulin regimen in use and some people may need insulin as well as tablet for their diabetes. If you have any questions or concerns please liaise with your Diabetes Team on 01709 427910 or the Endoscopy Unit on 01709 427029.

During the preparation please monitor your blood sugar every 4 hours.

The day before the procedure

Morning

Take your usual dose of diabetic tablets.

Lunch

Take your usual dose of diabetic tablets.

Evening

Take half your usual dose of diabetic tablets.

Commence bowel preparation and specified diet .

The day of the procedure

- No food on the morning of the procedure.
- Omit all diabetic medications.
- Clear fluids (which may contain sugar in the event of a "hypo" but not milk) up to 3 hours before the procedure.
- Take your own diabetic tablets to the Endoscopy Unit.

**Patients with diabetes on tablets undergoing
Colonoscopy on an afternoon list**

On arrival to the Endoscopy Unit

Inform the nurse that you have diabetes. Your blood sugar will be checked by the nurse booking you in.

After the procedure

Your blood sugar will be checked and when you are awake and comfortable you will be given a light snack and a drink. Take half of your usual lunchtime dose of diabetes tablets with it.

Resume your usual diabetic regimen the same evening/following day (if you do not take any diabetes medication in the evening).

What to do if you have a "hypo"

Follow these instructions if your blood sugar is below 4mmol or if you are symptomatic from a low blood sugar e.g. feeling hot and sweaty, feeling unwell or dizzy (even if you do not check your blood sugar);

- Take 60mls of Lucozade or 150mls of full sugar fizzy drink or 60mls of full sugar squash diluted to taste or three glucose tablets immediately.
- This does not mean that your procedure will need to be cancelled, but do avoid milky fluids.
- Do not drive to the hospital if your sugar is less than 5mmol or you have symptoms of "hypo" (get dropped off by someone else).

**Patients with diabetes on tablets undergoing
Colonoscopy on an afternoon list**

If your blood sugar is very high (>25 or if you symptomatic from a high blood sugar) when you arrive at the hospital, you will be put on a continuous glucose and insulin injection called an 'intravenous drip' which will be stopped after the colonoscopy camera test.

